

VS-Y10 series Handheld HD Industrial videoscope



Professional endoscope solution provider

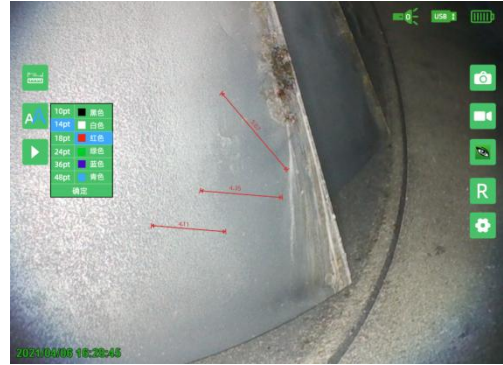
To be as you wish

Intelligent operate system

VS-Y series is equipped with a number of intelligent inspection functions, advanced technology, comprehensive functions, to assist inspectors to efficiently complete the inspection work.



HD screen display



Comparative measurement



Automatic defect identification (optional)



Smart Editing pictures



Remote Collaboration (optional)



64 GIGABytes solid state


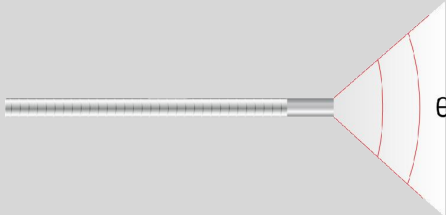



Host	Dimension	360*160*60mm
	Display	5.7-inch industrial touch LCD screen
	Audio	3.5mm Headphone/microphone jack
	Output port	VGA Video output (dual-screen synchronous display), dual USB output
	Storage	Built-in 64GB SSD and can be expandable up to 512GB
	Battery Power	Special rechargeable lithium battery pack, online charging, battery life \geq 4 hours
	Ip grade	IP54
	Working temperature	-20°C~70°C
	Storage temperature	-20°C~60°C
	Relative humidity	Max 95%, No condensation
System	OS	WES OS
	Operating mode	Full-screen touch and button double operation, five-way navigation button, double camera and video button
	Supporting function	Comparative measurement, automatic defect identification, real-time dynamic annotation, real-time screen watermarking, rapid defect identification
	File format	Image JPEG (JPG) format, video MP4 format
	File management	Support create, rename, move, and delete files and folders in Both Chinese and English, and save them to internal hard disks or USB flash drives to realize bidirectional copy between USB flash drives and hard disks
	Picture processing	Adaptive noise reduction, photo taking, video recording, negative film, flip, picture freezing, online editing, graffiti, postmark
	Language	Chinese (basic), French, English, German, Spanish, Italian, Japanese
Package case	Weight	10.6kg
	L*W*H	47*38*17cm

Camera and probe


The VS-Y10 series is available in a variety of lengths and diameters .You can select and replace pipelines according to the actual detection situation

Model		VS-Y10	
		VS-Y1010	VS-Y1005
Lens	Direction	Front view	
	FOV(θ)	120°	
	(DOF)	3mm~30mm	
	Pixels	160,000 pixels	
	Illumination	Rear high power LED fiber conduction	
Probe	Length(L)	/	
	Diameter(D)	1mm	
	Articulation	No articulation	
	Bend angle(α)	/	
	Operating temperature	-20°C~70°C	
Insert tube	Length	1m	2m
	Material	Spring Tube	

VS-Y (Front view)

<p>Lens direction</p>	
<p>FOV(θ)</p>	
<p>DOF</p>	
<p>Probe Length (L)</p>	
<p>Probe diameter(D)</p>	

Packing

No.	Name	QTY	Units	备注
1	Host	1	Set	
2	U disk	1	pcs	
3	Battery	1	pcs	
4	Package case	1	pcs	
5	Adapter	1	Set	
6	Tripod	1	pcs	
7	VAG cable	1	pcs	
8	Straps	1	pcs	
9	Stylus pen	1	pcs	
10	Warranty card	1	pcs	 <p style="text-align: center; font-size: small;">Warranty Card</p> <p style="text-align: center; font-size: x-small;">SHENZHEN VSMET CO., LTD.</p>
11	User manual	1	pcs	 <p style="text-align: center; font-size: small;">Industrial Endoscope</p>
12	Qualification	1	pcs	 <p style="text-align: center; font-size: x-small;">QUALIFIED CERTIFICATE</p> <p style="text-align: center; font-size: x-small;">MODEL: _____</p> <p style="text-align: center; font-size: x-small;">DATE: _____</p> <p style="text-align: center; font-size: x-small;">INSPECTOR: _____</p>