

## VS-Y20 series Handheld HD Industrial videoscope



Professional endoscope solution provider

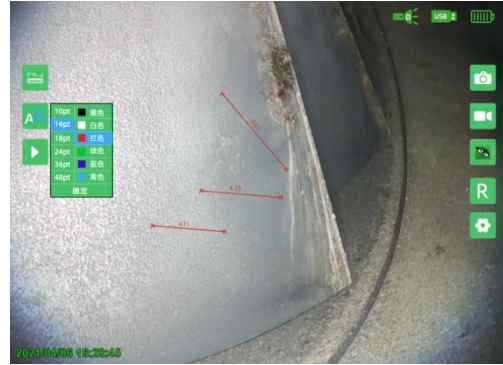
To be as you wish

## Intelligent operate system

VS-Y series is equipped with a number of intelligent inspection functions, advanced technology, comprehensive functions, to assist inspectors to efficiently complete the inspection work.



HD screen display



Comparative measurement



Automatic defect identification (optional)



Smart Editing pictures



Remote Collaboration (optional)




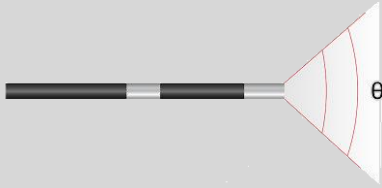



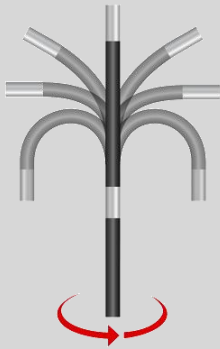

64 GIGABytes solid state

Host	Dimension	360*160*60mm
	Display	5.7-inch industrial touch LCD screen
	Audio	3.5mm Headphone/microphone jack
	Output port	VGA Video output (dual-screen synchronous display), dual USB output
	Storage	Built-in 64GB SSD and can be expandable up to 512GB
	Battery Power	Special rechargeable lithium battery pack, online charging, battery life $\geq 4$ hours
	IP grade	IP54
	Working temperature	-20°C~70°C
	Storage temperature	-20°C~60°C
	Relative humidity	Max 95%, No condensation
System	OS	WES OS
	Operating mode	Full-screen touch and button double operation, five-way navigation button, double camera and video button
	Supporting function	Comparative measurement, automatic defect identification, real-time dynamic annotation, real-time screen watermarking, rapid defect identification
	File format	Image JPEG (JPG) format, video MP4 format
	File management	Support create, rename, move, and delete files and folders in Both Chinese and English, and save them to internal hard disks or USB flash drives to realize bidirectional copy between USB flash drives and hard disks
	Picture processing	Adaptive noise reduction, photo taking, video recording, negative film, flip, picture freezing, online editing, graffiti, postmark
	Language	Chinese (basic), French, English, German, Spanish, Italian, Japanese
Package case	Weight	
	L*W*H	47*38*17cm


## Camera and probe

The VS-Y20 series is available in a variety of lengths and diameters .You can select and replace pipelines according to the actual detection situation

Model		VS-Y20		
		VS-Y2010	VS-Y2020	VS-Y2030
Lens	Direction	Direct view		
	View angle( $\theta$ )	120°		
	DOF	3mm~70mm		
	Pixel	160000		
	Illuminating system	LED Integrated lighting		
Probe	Length(L)	5±0.5mm		
	Diameter(D)	2.0mm		
	Articulating	360° full way articulation		
	Bending Angle( $\alpha$ )	$\geq 120^\circ$		
	Brightness of Illumination	3900Lux		
	Working temperature	-20°C~70°C		
Inserting tube	Length	1m	2m	3m
	Material	Flexible (tungsten braided tube)		

VS-Y (Direct view)	
Lens direction	
View angle( $\theta$ )	
DOF	
Probe Length(L)	
Probe diameter(D)	
360°articulation	
Bend angle( $\alpha$ )	

Packing

No.	Name	QTY	Units	备注
1	Host	1	Set	
2	U disk	1	pcs	
3	Battery	1	pcs	
4	Package case	1	pcs	
5	Adapter	1	Set	
6	Tripod	1	pcs	
7	VAG cable	1	pcs	
8	Straps	1	pcs	
9	Stylus pen	1	pcs	
10	Warranty card	1	pcs	
11	User manual	1	pcs	
12	Qualification	1	pcs	