

## VS-Y24 series Handheld HD Industrial videoscope



Professional endoscope solution provider

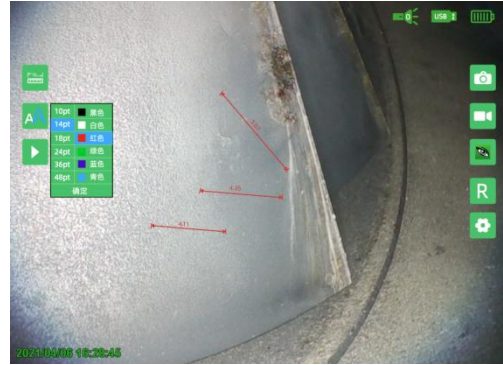
To be as you wish

## Intelligent operate system

VS-Y series is equipped with a number of intelligent inspection functions, advanced technology, comprehensive functions, to assist inspectors to efficiently complete the inspection work.



HD screen display



Comparative measurement



Automatic defect identification (optional)



Smart Editing pictures



Remote Collaboration (optional)




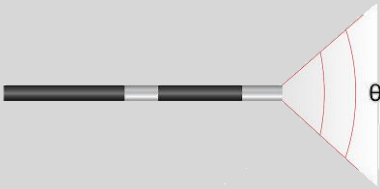



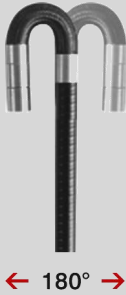

64 GIGABytes solid state

<b>Host</b>	Dimension	360*160*60mm
	Display	5.7-inch industrial touch LCD screen
	Audio	3.5mm Headphone/microphone jack
	Output port	VGA Video output (dual-screen synchronous display), dual USB output
	Storage	Built-in 64GB SSD and can be expandable up to 512GB
	Battery Power	Special rechargeable lithium battery pack, online charging, battery life $\geq 4$ hours
	Ip grade	IP54
	Working temperature	-20°C~70°C
	Storage temperature	-20°C~60°C
	Relative humidity	Max 95%, No condensation
<b>System</b>	OS	WES OS
	Operating mode	Full-screen touch and button double operation, five-way navigation button, double camera and video button
	Supporting function	Comparative measurement, automatic defect identification, real-time dynamic annotation, real-time screen watermarking, rapid defect identification
	File format	Image JPEG (JPG) format, video MP4 format
	File management	Support create, rename, move, and delete files and folders in Both Chinese and English, and save them to internal hard disks or USB flash drives to realize bidirectional copy between USB flash drives and hard disks
	Picture processing	Adaptive noise reduction, photo taking, video recording, negative film, flip, picture freezing, online editing, graffiti, postmark
	Language	Chinese (basic), French, English, German, Spanish, Italian, Japanese
<b>Package case</b>	Weight	10.6kg
	L*W*H	47*38*17cm



## Camera and probe

The VS-Y24 series is available in a variety of lengths and diameters .You can select and replace pipelines according to the actual detection situation

Model		VS-Y24		
		VS-Y2410	VS-Y2420	VS-Y2430
Lens camera	Direction	Front view		
	FOV( $\theta$ )	120°		
	DOF	3mm~70mm, 5~150mm		
	Pixels	160,000pixels		
	Illumination	Rear high power LED fiber conduction		
Porbe	Length(L)	4.5±0.5mm		
	Diameter(D)	2.4m		
	Articulation	180°Two way articulation		
	Bend angle( $\alpha$ )	150°±10°	110°±10°	100°±10°
	Brightness of	$\leq 1m$	1m<L≤2m	
	Illumination	$\geq 15000LUX$	$\geq 10000LUX$	
	Operating temperature	-20°C~70°C		
Insert tube	Length	1m	2m	3m
	Material	Flexible (tungsten braided tube)		

VS-Y (Front view)	
Lens direction	
FOV( $\theta$ )	
DOF	
Probe length (L)	
Probe diameter(D)	
180° articulation	
Bend angle ( $\alpha$ )	

## Packing

No.	Name	QTY	Units	备注
1	Host	1	Set	
2	U disk	1	pcs	
3	Battery	1	pcs	
4	Package case	1	pcs	
5	Adapter	1	Set	
6	Tripod	1	pcs	
7	VAG cable	1	pcs	
8	Straps	1	pcs	
9	Stylus pen	1	pcs	
10	Warranty card	1	pcs	 <p style="text-align: center; font-size: small;">Warranty Card</p> <p style="text-align: center; font-size: x-small;">SHENZHEN VEMET CO., LTD.</p>
11	User manual	1	pcs	 <p style="text-align: center; font-size: small;">Industrial Endoscope</p>
12	Qualification	1	pcs	 <p style="text-align: center; font-size: x-small;">QUALIFIED CERTIFICATE</p> <p style="text-align: center; font-size: x-small;">MODEL: _____</p> <p style="text-align: center; font-size: x-small;">DATE: _____</p> <p style="text-align: center; font-size: x-small;">INSPECTOR: _____</p>