

VS-Y39 series handheld HD industrial endoscope specification

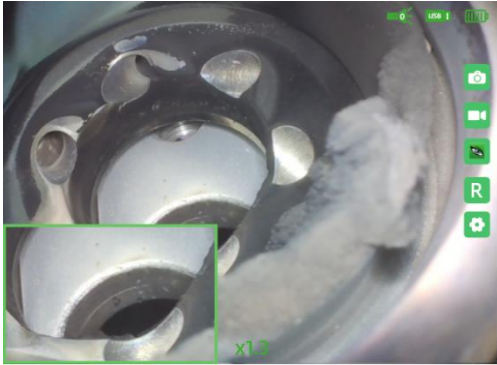


Professional industrial endoscope solution supplier

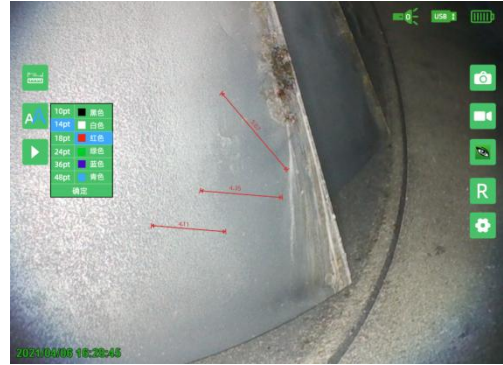
We always strive to be what you want

Intelligent operation system

VS-Y series are equipped with a number of intelligent detection functions, the product has advanced technology and comprehensive functions, assisting the inspectors to complete the inspection work efficiently.



Double view dual lens real time display



Comparative measurement



Defect automatic identification



Intelligent picture editing



Remote collaboration



64G HDD storage

Host	Size	360*160*60mm
	Display	5.7-inch industrial touch LCD screen
	Audio	3.5mm earphone/microphone jack
	Output	VGA video output (Dual screen synchronous display), dual USB output port
	Storage	64GB SSD and can be expandable up to 512GB
	Power	Special rechargeable lithium battery pack, online charging, battery life ≥ 4 hours
	IP Grade	IP54
	Working temperature	10°C~70°C
	Storage temperature	-20°C~80°C
	Relative humidity	Max 95%, No condensation
System	Operation System	WES system
	Operation method	Full-screen touch and button dual operation, five-way navigation button, dual camera and video buttons
	Support function	Comparative measurement, automatic defect identification, real-time dynamic annotation, real-time screen watermarking, rapid defect identification
	File format	Image: JPEG (JPG), Video:MP4
	File management	Support the creation of files and folders, rename, move, delete, and store them in the internal hard disk or U disk, which can realize two-way copying between U disk and hard disk
	Image handle	Adaptive Noise Reduction, Photo, Video, Negative, Flip, Freeze, Online Editing, Graffiti, Postmark
Support Language	Chinese (Simplified and Traditional), French, English, German, Spanish, Italian, Japanese	
Packing Case	Weight	10.6kg
	Dimension	47*38*17cm












Camera and Probe

There are several length and diameter for VS-Y39 series for you to choose according to your requirement.

Model		VS-Y39					
		VS-Y3910	VS-Y3920	VS-Y3930	VS-Y3940	VS-Y3950	VS-Y3960
Lens	Direction	Direct view/Side view/Double view					
	View angle(θ)	120°					
	DOF	8mm~150mm					
	Pixel	1 million					
	Illuminating system	Rear high-power LED fiber optic transmission					
Probe	Length	Direct view/Side view: 12±0.5mm					
		Double view: 19±0.5mm					
	Diameter	3.9mm					
	Articulating	360° full direction articulation					
	Bending Angle(α)	170°±10°	150°±10°	130°±10°	110°±10°	90°±10°	60°±10°
	Brightness of Illumination	≤1m	1m<L≤2m	2m<L≤4m		4m<L≤6m	>6m
		≥80000LUX	≥70000LUX	≥60000LUX		≥50000LUX	/
	LED illumination: ≥15000LUX						
IP grade	IP67						
Working temperature	-20°C~70°C						
Insert tube	Length	1m	2m	3m	4m	5m	6m
	Material	Flexible (tungsten braided tube)					

	VS-Y (Direct view)	VS-YC (Side view)	VS-YS (Double view)
Lens direction			
View angle(θ)			
DOF			
Probe Length(L)			
Probe diameter(D)			
360°articulation			
Bending angle(α)			

Packing list

No	Name	PCS	Unit	Photos
1	Host	1	pcs	
2	U Disk	1	pcs	
3	Battery	1	pcs	
4	Packing Cast	1	pcs	
5	Charger	1	pcs	
6	Tripod	1	pcs	
7	USB cable	1	pcs	
8	Belt	1	pcs	
9	Stylus pen	1	pcs	
10	Warranty card	1	pcs	
11	User manual	1	pcs	
12	Guarantee Card	1	pcs	