

VS-Y45 series handheld HD industrial endoscope specification

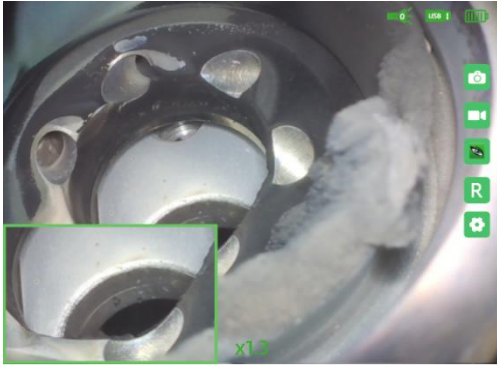


Professional industrial endoscope solution supplier

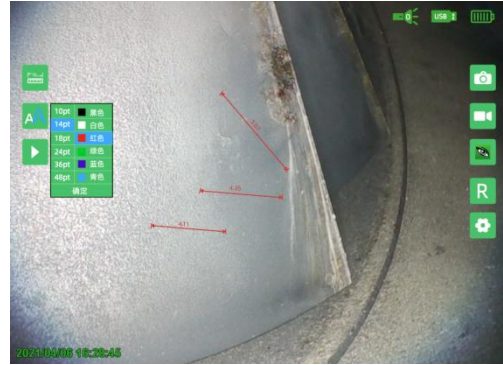
We always strive to be what you want

Intelligent operation system

VS-Y series are equipped with a number of intelligent detection functions, the product has advanced technology and comprehensive functions, assisting the inspectors to complete the inspection work efficiently.



Double view dual lens real time display



Comparative measurement



Defect automatic identification



Intelligent picture editing



Remote collaboration








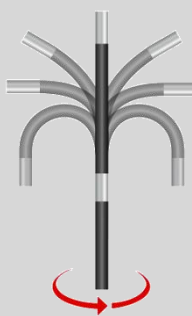
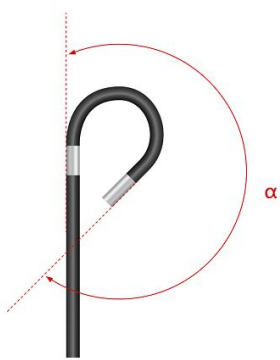
64G HDD storage

Host	Size	360*160*60mm
	Display	5.7-inch industrial touch LCD screen
	Audio	3.5mm earphone/microphone jack
	Output	VGA video output (Dual screen synchronous display), dual USB output port
	Storage	64GB SSD and can be expandable up to 512GB
	Power	Special rechargeable lithium battery pack, online charging, battery life ≥ 4 hours
	IP Grade	IP54
	Working temperature	10°C~70°C
	Storage temperature	-20°C~80°C
	Relative humidity	Max 95%, No condensation
System	Operation System	WES system
	Operation method	Full-screen touch and button dual operation, five-way navigation button, dual camera and video buttons
	Support function	Comparative measurement, automatic defect identification, real-time dynamic annotation, real-time screen watermarking, rapid defect identification
	File format	Image: JPEG (JPG), Video:MP4
	File management	Support the creation of files and folders, rename, move, delete, and store them in the internal hard disk or U disk, which can realize two-way copying between U disk and hard disk
	Image handle	Adaptive Noise Reduction, Photo, Video, Negative, Flip, Freeze, Online Editing, Graffiti, Postmark
	Support Language	Chinese (Simplified and Traditional), French, English, German, Spanish, Italian, Japanese
Packing Case	Weight	10.6kg
	Dimension	47*38*17cm










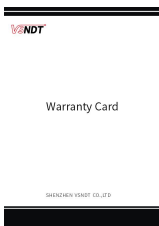

Camera and Probe

There are several length and diameter for VS-Y45 series for you to chose according to your requirement.

Model		VS-Y45					
		VS-Y4510	VS-Y4520	VS-Y4530	VS-Y4540	VS-Y4550	VS-Y4560
Lens	Direction	Side view					
	View angle(θ)	120°					
	DOF	8mm~150mm					
	View angle(θ)	1 million					
	Illuminating system	Rear high-power LED fiber optic transmission					
Probe	Length	13mm±0.5mm					
	Diameter	4.5mm					
	Articulating	360° full direction articulation					
	Bending Angle(α)	170°±10°		130°±10°	110°±10°	90°±10°	60°±10°
	IP grade	IP67					
	Working temperature	-20°C~70°C					
Insert tube	Length	1m	2m	3m	4m	5m	6m
	Material	Flexible (tungsten braided tube)					

VS-YC (Side view)	
Lens direction	
View angle(θ)	
DOF	
Probe Length(L)	
Probe diameter(D)	
360°articulation	
Bending angle(α)	

Packing list

No	Name	PCS	Unit	Photos
1	Host	1	pcs	
2	U Disk	1	pcs	
3	Battery	1	pcs	
4	Packing Cast	1	pcs	
5	Charger	1	pcs	
6	Tripod	1	pcs	
7	USB cable	1	pcs	
8	Belt	1	pcs	
9	Stylus pen	1	pcs	
10	Warranty card	1	pcs	
11	User manual	1	pcs	
12	Guarantee Card	1	pcs	