

VS-LA12 series automotive industrial endoscope specification

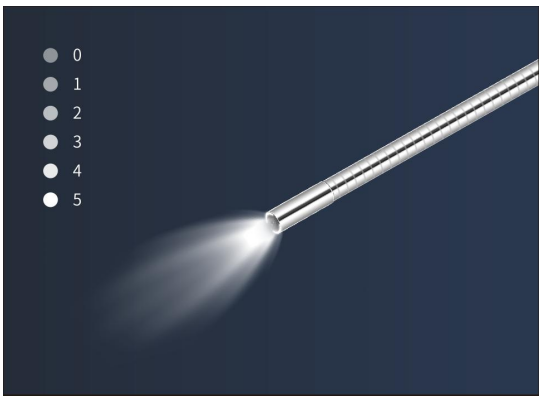


Professional industrial endoscope solution supplier

To be as your wish

More efficient detection

WS-LA series is equipped with a number of detection functions, with advanced technology, and comprehensive functions, which assists the inspectors to complete the inspection work efficiently.

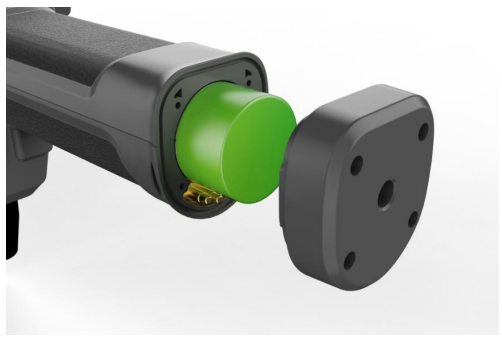


Optical fiber illumination for clearer images

0.95-8 Various probe diameters are available



More probes for optional



26650 battery, battery life \geq 4 hours



Modular Design Detachable Display



WIFI wireless transmission (for optional)




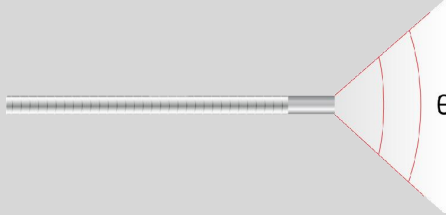



Support connection to external larger display

| | | |
|---------------------|---------------------|--|
| Host | Dimension | 265*140*132.7mm |
| | Display | 5-inch IPS high-definition display screen |
| | Output port | TYPE-C |
| | Storage | Standard 32G TF card, Support up to 128G |
| | Power | 26650 battery, battery life \geq 4 hours |
| | IP grade | IP54 |
| | Working temperature | -10°C~50°C |
| | Storage temperature | -20°C~60°C |
| System | Relative humidity | Max 90%, No condensation |
| | Operation System | Multifunctional operating system |
| | Operation method | Button navigation, one click photography and recording |
| | Support Function | With freeze, zoom, photo, flip, video playback, analog ruler functions |
| | File Format | Image:JPEG (JPG), Video:mov |
| Packing Case | Support Language | Multi-language Operating System |
| | Weight | |
| | L*W*H | 345×265×91mm |

Camera and Probe

There are several length and diameter for WS-LA12 series for you to chose according to your requirement.

| Model | | WS-LA12 | | |
|-----------------------|----------------------------|--|----------------|--|
| | | WS-LA1210 | WS-LA1220 | |
| Lens | Direction | Direct view | | |
| | View angle | 120° | | |
| | DOF | 3mm~30mm | | |
| | Pixel | 160000 | | |
| | Illuminating system | Rear high-power LED fiber optic transmission | | |
| Probe | Length(L) | / | | |
| | Diameter(D) | 1.2mm | | |
| | Articulating | No Articulating | | |
| | Brightness of Illumination | 1m | 1m<L≤2m | |
| | | \geq 7000Lux | \geq 5600Lux | |
| | Working temperature | -20°C~70°C | | |
| Inserting tube | Length | 1m | 2m | |
| | Material | Bourdon tube | | |

| | WS-LA (Direct view) |
|------------------------|--|
| Lens direction |  |
| View angle(θ) |  |
| DOF |  |
| Probe Length(L) |  |
| Probe diameter(D) |  |

Packing list

| No | Name | PCS | Unit | Photos |
|----|----------------|-----|------|---|
| 1 | Host | 1 | pcs |  |
| 2 | 26650 Battery | 1 | pcs |  |
| 3 | Instrument bag | 1 | pcs |  |
| 4 | Memory Card | 1 | pcs |  |
| 5 | Card reader | 1 | pcs |  |
| 6 | USB cable | 1 | pcs |  |
| 7 | HDMI cable | 1 | pcs |  |
| 8 | Charger | 1 | pcs |  |
| 9 | Warranty card | 1 | pcs |  <p style="text-align: center;">Warranty Card</p> <p style="text-align: center; font-size: small;">SHENZHEN VIMET CO., LTD</p> |
| 10 | User manual | 1 | pcs | <p style="text-align: center;">Industrial Endoscope</p> <p style="text-align: center; font-size: x-small; color: red;">User Manual</p>  |
| 11 | Guarantee Card | 1 | pcs |  <p style="text-align: center; font-size: x-small;">QUALIFIED CERTIFICATE</p> <p style="text-align: center; font-size: x-small;">MODEL: _____</p> <p style="text-align: center; font-size: x-small;">DATE: _____</p> <p style="text-align: center; font-size: x-small;">INSPECTOR: _____</p> |