

VS-LA20 series automotive industrial endoscope specification

TF card
HDMI port
AUX port
TYPE-C

Screen

⏻ ON/OFF/Screen freezes button
↶ Return/Playback
▲ UP/Flip button

☰ OK Menu/OK
💡 Brightness adjustment /Delete button
▼ Down/Zoom button

Insert tube (Length for optional)

Back button: Photo/Video

Battery Compartment

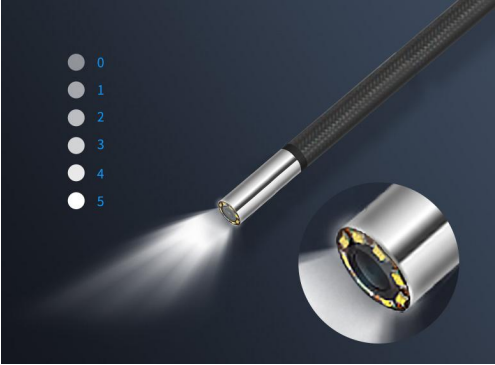
Probe
(1MP HD resolution, 360°
Full way articulation)

Professional industrial endoscope solution supplier

To be as your wish

More efficient detection

WS-LA series is equipped with a number of detection functions, with advanced technology, and comprehensive functions, which assists the inspectors to complete the inspection work efficiently.

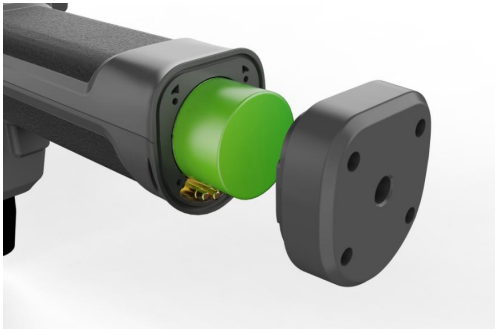


LED integrated lighting, sufficient light source

0.95-8 Various probe diameters are available



More probes for optional



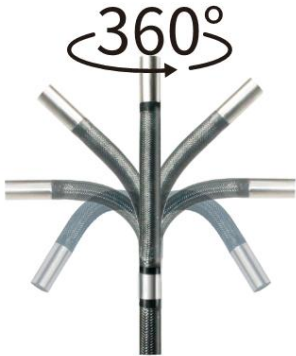
26650 battery, battery life ≥ 4 hours



Modular Design Detachable Display



WIFI wireless transmission (for optional)








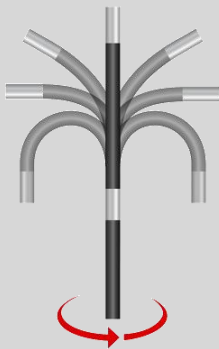

360° full way articulation

Host	Dimension	265*140*132.7mm
	Display	5-inch IPS high-definition display screen
	Output port	TYPE-C
	Storage	Standard 32G TF card, Support up to 128G
	Power	26650 battery, battery life \geq 4 hours
	IP grade	IP54
	Working temperature	-10°C~50°C
	Storage temperature	-20°C~60°C
System	Relative humidity	Max 90%, No condensation
	Operation System	Multifunctional operating system
	Operation method	Button navigation, one click photography and recording
	Support Function	With freeze, zoom, photo, flip, video playback, analog ruler functions
	File Format	Image:JPEG (JPG), Video:mov
Packing Case	Support Language	Multi-language Operating System
	Weight	
	L*W*H	345×265×91mm

Camera and Probe

There are several length and diameter for WS-LA20 series for you to chose according to your requirement.

Model		WS-LA20		
		WS-LA2010	WS-LA2020	WS-LA2030
Lens	Direction	Direct view		
	View angle(θ)	120°		
	DOF	3mm~70mm		
	Pixel	160000		
	Illuminating system	LED Integrated lighting		
Probe	Length(L)	5±0.5mm		
	Diameter(D)	2.0mm		
	Articulating	360° full way articulation		
	Bending Angle(α)	\geq 120°		
	Brightness of Illumination	2800Lux		
	Working temperature	-20°C~70°C		
Inserting tube	Length	1m	2m	3m
	Material	Flexible (tungsten braided tube)		

WS-LA (Direct view)	
Lens direction	
View angle(θ)	
DOF	
Probe Length(L)	
Probe diameter(D)	
360° articulation	
Bend angle(α)	

Packing list

No	Name	PCS	Unit	Photos
1	Host	1	pcs	
2	26650 Battery	1	pcs	
3	Instrument bag	1	pcs	
4	Memory Card	1	pcs	
5	Card reader	1	pcs	
6	USB cable	1	pcs	
7	HDMI cable	1	pcs	
8	Charger	1	pcs	
9	Warranty card	1	pcs	 <p style="text-align: center;">Warranty Card</p> <p style="text-align: center; font-size: small;">SHENZHEN VINDT CO., LTD</p>
10	User manual	1	pcs	<p style="text-align: center;">Industrial Endoscope</p> <p style="text-align: center; font-size: x-small; color: red;">User Manual</p> 
11	Guarantee Card	1	pcs	 <p style="text-align: center; font-size: x-small;">QUALIFIED CERTIFICATE</p> <p style="text-align: center; font-size: x-small;">MODEL: _____</p> <p style="text-align: center; font-size: x-small;">DATE: _____</p> <p style="text-align: center; font-size: x-small;">INSPECTOR: _____</p>