

VS-LA24 series automotive industrial endoscope specification

TF card
HDMI port
AUX port
TYPE-C

Screen

⏻ ON/OFF/Screen freezes button
↶ Return/Playback
▲ UP/Flip button

☰ OK Menu/OK
💡 Brightness adjustment /Delete button
▼ Down/Zoom button

Insert tube (Length for optional)

Back button: Photo/Video

Battery Compartment

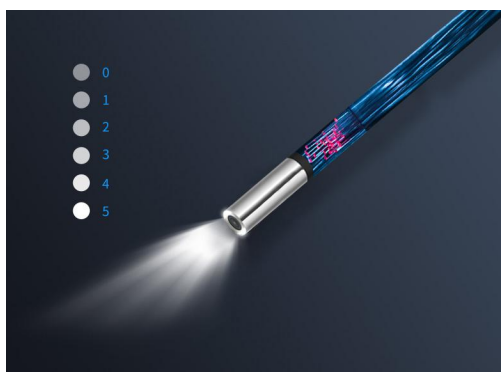
Probe
(1MP HD resolution, 360°
Full way articulation)

Professional industrial endoscope solution supplier

To be as your wish

More efficient detection

WS-LA series is equipped with a number of detection functions, with advanced technology, and comprehensive functions, which assists the inspectors to complete the inspection work efficiently.

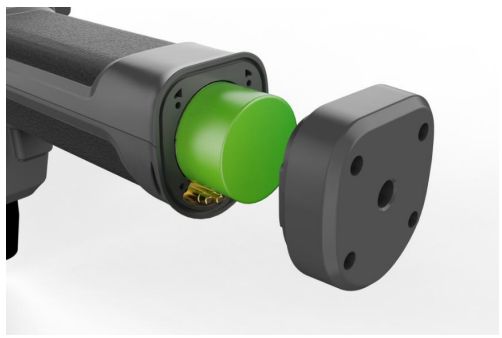


Optical fiber illumination for clearer images

0.95-8 Various probe diameters are available



More probes for optional



26650 battery, battery life \geq 4 hours



Modular Design Detachable Display



WIFI wireless transmission (for optional)





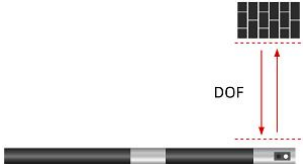



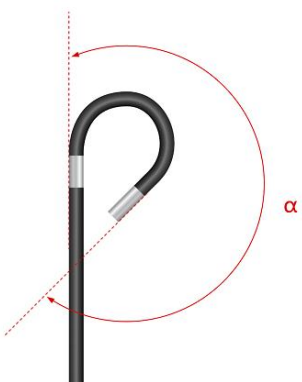
180°two way Articulating

Host	Dimension	265*140*132.7mm
	Display	5-inch IPS high-definition display screen
	Output port	TYPE-C
	Storage	Standard 32G TF card, Support up to 128G
	Power	26650 battery, battery life \geq 4 hours
	IP grade	IP54
	Working temperature	-10°C~50°C
	Storage temperature	-20°C~60°C
	Relative humidity	Max 90%, No condensation
System	Operation System	Multifunctional operating system
	Operation method	Button navigation, one click photography and recording
	Support Function	With freeze, zoom, photo, flip, video playback, analog ruler functions
	File Format	Image:JPEG (JPG), Video:mov
	Support Language	Multi-language Operating System
Packing Case	Weight	
	L*W*H	345×265×91mm

Camera and Probe

There are several length and diameter for WS-LA24 series for you to chose according to your requirement.

Model		WS-LA24		
		WS-LA2410	WS-LA2420	WS-LA2430
Lens	Direction	Direct view		
	View angle	120°		
	DOF	3mm~70mm, 5~100mm		
	Pixel	160000		
	Illuminating system	Rear high-power LED fiber optic transmission		
Probe	Length(L)	4.5±0.5mm		
	Diameter(D)	2.4mm		
	Articulating	180°two way Articulating		
	Bending Angle(α)	150°±10°		100°±10°
	Brightness of Illumination	1m	1m<L≤3m	
		\geq 7000Lux	\geq 5600Lux	
	Working temperature	-20°C~70°C		
Inserting tube	Length	1m	2m	3m
	Material	Flexible (tungsten braided tube)		

WS-LA (Direct view)	
Lens direction	
View angle(θ)	
DOF	
Probe Length(L)	
Probe diameter(D)	
Articulation	
Bending angle(α)	

Packing list

No	Name	PCS	Unit	Photos
1	Host	1	pcs	
2	26650 Battery	1	pcs	
3	Instrument bag	1	pcs	
4	Memory Card	1	pcs	
5	Card reader	1	pcs	
6	USB cable	1	pcs	
7	HDMI cable	1	pcs	
8	Charger	1	pcs	
9	Warranty card	1	pcs	 <p style="text-align: center;">Warranty Card</p> <p style="text-align: center;"><small>SHENZHEN VIMET CO., LTD</small></p>
10	User manual	1	pcs	<p style="text-align: center;">Industrial Endoscope</p> <p style="text-align: center;"><small>User Manual</small></p> 
11	Guarantee Card	1	pcs	 <p style="text-align: center;">QUALIFIED CERTIFICATE</p> <p style="text-align: center;"><small>MODEL: _____</small></p> <p style="text-align: center;"><small>DATE: _____</small></p> <p style="text-align: center;"><small>INSPECTOR: _____</small></p>