

## VS-LA45 series automotive industrial endoscope specification

TF card  
HDMI port  
AUX port  
TYPE-C

Screen

⏻ ON/OFF/Screen freezes button  
↶ Return/Playback  
▲ UP/Flip button

☰ OK Menu/OK  
💡 Brightness adjustment /Delete button  
▼ Down/Zoom button

Back button: Photo/Video

Insert tube (Length for optional)

Battery Compartment

Probe  
(1MP HD resolution, 360°  
Full way articulation)

Professional industrial endoscope solution supplier

To be as your wish

# More efficient detection

WS-LA series is equipped with a number of detection functions, with advanced technology, and comprehensive functions, which assists the inspectors to complete the inspection work efficiently.

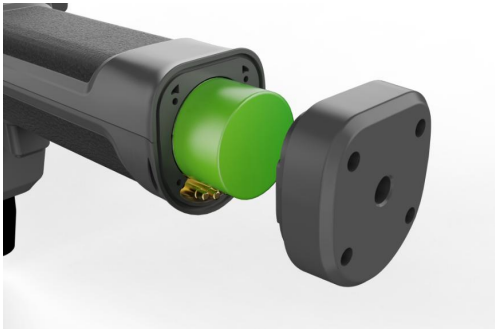


Optical fiber illumination for clearer images

## 0.95-8 Various probe diameters are available



More probes for optional



26650 battery, battery life  $\geq$  4 hours



Modular Design Detachable Display



WIFI wireless transmission (for optional)




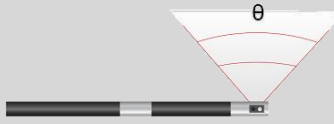



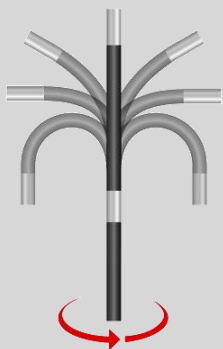

360° full way articulation

<b>Host</b>	Dimension	265*140*132.7mm
	Display	5-inch IPS high-definition display screen
	Output port	TYPE-C
	Storage	Standard 32G TF card, Support up to 128G
	Power	26650 battery, battery life $\cong$ 4 hours
	IP grade	IP54
	Working temperature	-10°C~50°C
	Storage temperature	-20°C~60°C
	Relative humidity	Max 90%, No condensation
<b>System</b>	Operation System	Multifunctional operating system
	Operation method	Button navigation, one click photography and recording
	Support Function	With freeze, zoom, photo, flip, video playback, analog ruler functions
	File Format	Image:JPEG (JPG), Video:mov
	Support Language	Multi-language Operating System
<b>Packing Case</b>	Weight	
	L*W*H	345×265×91mm

## Camera and Probe

There are several length and diameter for WS-LA45 series for you to chose according to your requirement.

Model		WS-LA45		
		WS-LA4510	WS-LA4520	WS-LA4530
<b>Lens</b>	Direction	Side view		
	View angle( $\theta$ )	120°		
	DOF	12mm~200mm		
	Pixel	1MP		
	Illuminating system	Rear high-power LED fiber optic transmission		
<b>Probe</b>	Length(L)	13±0.5mm		
	Diameter(D)	4.5mm		
	Articulating	360° full direction articulation		
	Bending Angle( $\alpha$ )	170°±10°		130°±10°
	IP grade	IP67		
	Working temperature	-20°C~70°C		
<b>Insert tube</b>	Length	1m	2m	3m
	Material	Flexible (tungsten braided tube)		

WS-LAC (Side view)	
Lens direction	
View angle( $\theta$ )	
DOF	
Probe Length(L)	
Probe diameter(D)	
360°articulation	
Bending angle( $\alpha$ )	

## Packing list

No	Name	PCS	Unit	Photos
1	Host	1	pcs	
2	26650 Battery	1	pcs	
3	Instrument bag	1	pcs	
4	Memory Card	1	pcs	
5	Card reader	1	pcs	
6	USB cable	1	pcs	
7	HDMI cable	1	pcs	
8	Charger	1	pcs	
9	Warranty card	1	pcs	 <p style="text-align: center;">Warranty Card</p> <p style="text-align: center; font-size: small;">SHENZHEN VIMET CO., LTD</p>
10	User manual	1	pcs	<p style="text-align: center;">Industrial Endoscope</p> <p style="text-align: center; font-size: x-small; color: red;">User Manual</p> 
11	Guarantee Card	1	pcs	 <p style="text-align: center; font-size: x-small;">QUALIFIED CERTIFICATE</p> <p style="text-align: center; font-size: x-small;">MODEL: _____</p> <p style="text-align: center; font-size: x-small;">DATE: _____</p> <p style="text-align: center; font-size: x-small;">INSPECTOR: _____</p>